

- LHG 5
- hAP AC
- Metal 52 ac

- 911 Lite5 ac
- Upcoming MUMs

New low-cost 5GHz 24.5dBi CPE/backbone LHG 5

The Light Head Grid (LHG) is a compact and light wireless device with an integrated 24.5 dBi grid antenna at a revolutionary price. It is perfect for point to point links or for use as a CPE at longer distances. We are already shipping to distributors. Contact your favorite [Distributor](#) to obtain your LHG 5 now!

\$59



The grid design ensures protection against wind, and the fact that the antenna element is built into the wireless unit means no loss on cables.

The device comes disassembled for compact shipping, but is very easy to assemble and includes a simple to use grounding attachment point. The package also contains a small adapter for tilting the antenna five degrees from the original position.



K-LHG kit



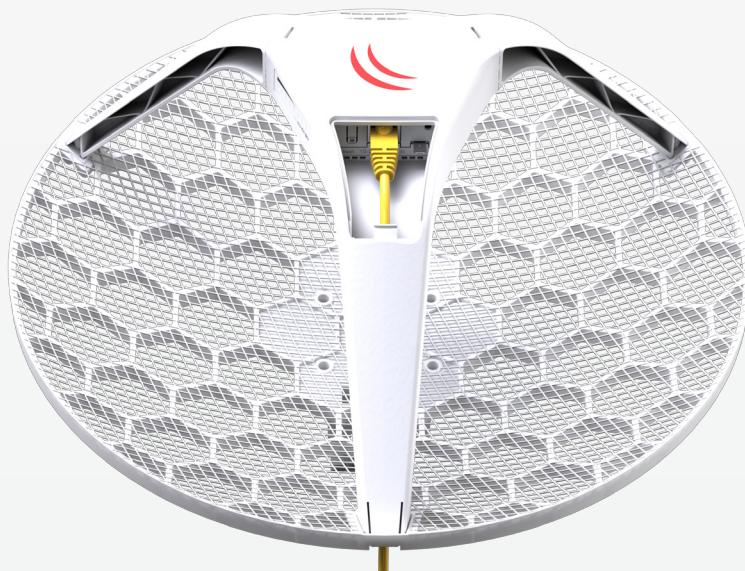
24V 0.38A Power adapter



PoE injector



2x metal rings



[View on the web](#)

hAP ac

The hAP ac is our most universal home or office wireless device. It is a dual band device with Gigabit ports that allow the full advantages of 802.11ac technology speed, while maintaining compatibility with legacy devices in 2GHz 802.11 b/g/n and 5GHz a/n modes.

The omnidirectional antennas allow to mount the hAP ac in any location, and the high power transmitter will ensure good coverage for the mobile devices in your home, office or public location.

- Triple-chain wireless 2.4 GHz
- Triple-chain wireless 5 GHz
- 720 MHz CPU
- 128 MB of RAM
- Five x Gigabit Ethernet ports
- SFP cage
- Passive PoE output on port 5
- USB port for 3G/4G modem



24V 1.2A Power
adapter



\$129

[View on the web](#)

Other helpful features include a USB port for attaching extra storage or a 3G/4G modem, PoE output on the last Ethernet port, to power other RouterBOARD devices without needing an extra power adapter and a SFP cage, for connecting active or passive optical network modules.

Metal 52 ac

The Metal is a completely waterproof and rugged outdoor wireless device with a super high output power.

Now with 802.11ac support, a Gigabit Ethernet port and a selectable wireless band (2.4GHz or 5GHz, up 80 MHz wide channel). The new Gigabit port will help you utilize the full benefit of 802.11ac high speed wireless.

The Metal 52 ac supports 2.4GHz, 5GHz and all the legacy wireless modes as well (802.11 b/g/n for 2.4GHz and 802.11 ac/n/a for 5GHz).



Fully sealed, industrial design metal case, powered by RouterBOARD and RouterOS. With 1300mW of output power - to reach the last mile, in any conditions. The Metal comes with an AP software license, so you can attach your favorite antenna to use it as an AP, to make wireless point-to-point links or as a CPE- whatever you prefer!

The Metal 52 ac includes a Dual Band 2.4/5GHz Omni directional antenna (6dBi 2.4GHz, 8dBi 5GHz), so you can use the unit right out of the box, or use your own antenna.



24V 0.8A Power adapter



2x Mounting loops



Gigabit PoE injector



Angled N connector



2x Metal rings



Dual Band 2.4/5Ghz (6dBi 2.4Ghz, 8dBi 5GHz)



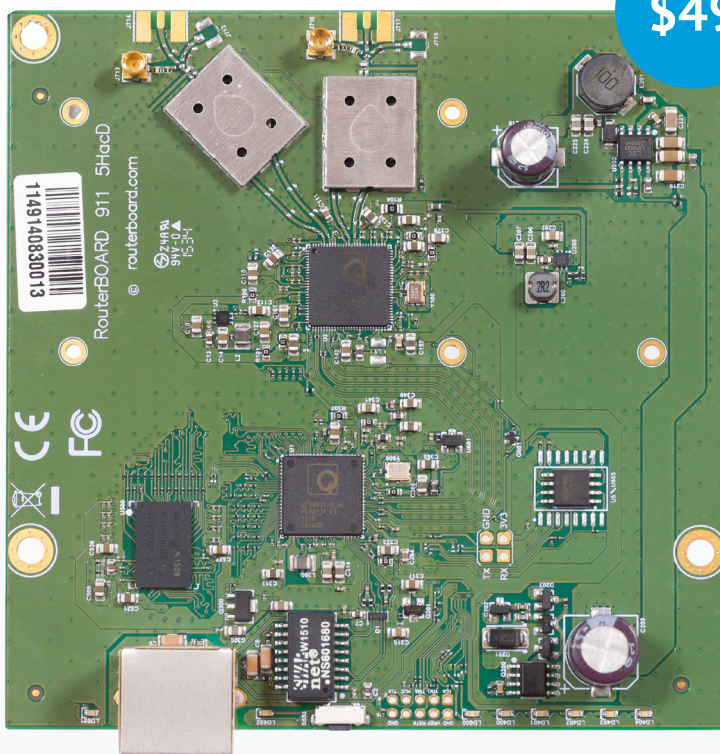
911 Lite5 ac

The 911 Lite5 ac is upgrade for our low-cost 911 Lite5 dual model.

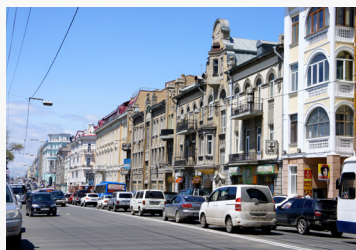
It's a small CPE type RouterBOARD wireless router with an integrated 5Ghz dual-chain wireless card, now with added 802.11ac support.

It's equipped with powerful 650MHz CPU and 64MB, great for building custom 5Ghz CPE or Backhaul units. Unit is equipped with 10/100Mbps Ethernet port.

[View on the web](#)



Upcoming MUMs



Russia, Vladivostok, March 18



China, Shanghai, April 10



Philippines, Manila, April 13



Mexico, Mexico City, April 22



USA, Dallas/Fort Worth,
April 28 - 29



Indonesia, Jakarta,
October 13 - 14



United Arab Emirates, Dubai,
October 17