

- MUM Indonesia
- CRS210-8G-2S+IN
- CRS212-1G-10S-1S+IN
- CCR1072 testing

MUM in Indonesia 2014 - nearly 2000 participants!



We have concluded the year 2014 with a giant conference in Yogyakarta, Indonesia - nearly 2000 participants attended this MikroTik User Meeting, the largest MUM ever!

- [Presentation videos](#)
- [Presentation slides](#)
- [MUM photo gallery](#)

We are happy to have met all of you, we have heard your suggestions and feature requests and in year 2015 we will be working hard to make as much of them possible as we can.

We will continue to make MikroTik User Meetings around the world this year, so if you didn't make it to Indonesia — don't worry, we might be coming to your country next!

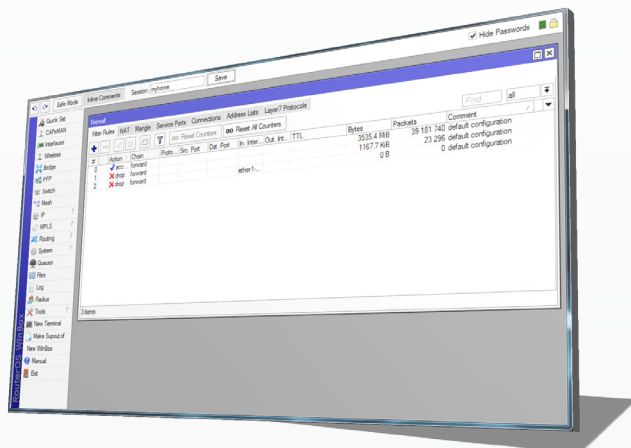
See you in the MUM



Winbox 3 release candidate

Due to popular demand we are introducing a big upgrade to our GUI configuration method - Winbox. The new version includes some long requested features and even new ones.

The new Winbox can now remember all of your settings and layouts in each router, or use your favorite layout for other routers too - you only need to see Firewall Filter with a specific set of columns? No problem, save this session and then use it whenever connecting to any router.

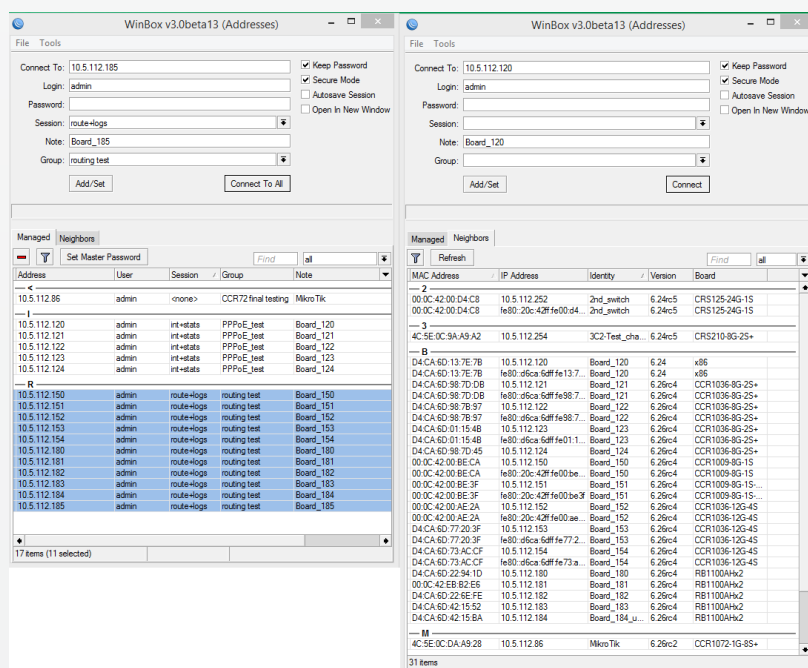


Another great feature is the ability to group saved routers into groups by location or list (as you prefer). You can also sort them by address, username, session, group, note and even model name. If your list is huge - search and filter are also available. And what would such management possibilities be without ability to have this on multiple computers? This file is easily transferable and can even be used in Dropbox, so you can have synchronized router lists in all your computers.

We have also added a global "inline comments" setting, so that all rule lists can have the comments inside it's own column, not under each rule. This also makes it possible to sort by comment. And of course, this setting is remembered between sessions.

Winbox 3 is also very secure. To protect your router list, you can set up a "Master password" which will encrypt the winbox database file.

- Remembers all layout details between sessions
- Inline comments global setting
- Winbox loader can self upgrade
- Choose any of the saved sessions when connecting to a router
- Group, filter and sort saved routers
- Set up master password to encrypt router database
- Move database to Dropbox or copy to a different PC
- Import or export database to Winbox 2 format
- Select multiple routers from the saved list, and "Connect to all"



Download Winbox 3 RC here:

<http://download2.mikrotik.com/routeros/winbox/3.0rc1/winbox.exe>

CRS210-8G-2S+IN

It comes with eight Gigabit Ethernet ports and **two SFP+ cages** for 10G connectivity (first port supports 1.25G/10G modules, second port only 10G modules). Product supports 10-57V DC.

Our CRS series combines the best features of a fully functional router and a Layer 3 switch, is powered by the familiar RouterOS. All the specific Switch configuration options are available in a special Switch menu, but if you want, ports can be removed from the switch configuration, and used for routing purposes.



24V 0.8A power adapter



Rackmount ears

[View product online](#)



CRS212-1G-10S-1S+IN

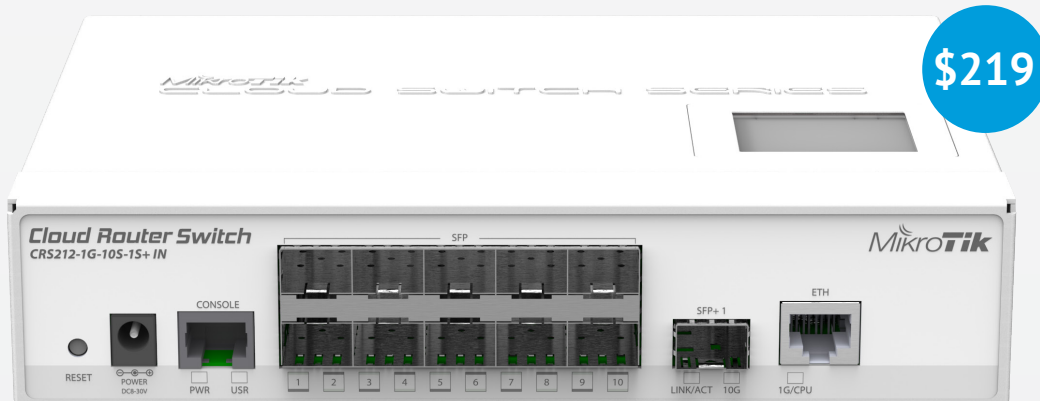
It comes with one Gigabit Ethernet RJ45 port, **ten SFP cages** and one 10G SFP+ cage, as well as LCD panel and serial port (RJ45). Product includes indoor desktop case and power supply.

Our CRS series combines the best features of a fully functional router and a Layer 3 switch, is powered by the familiar RouterOS. All the specific Switch configuration options are available in a special Switch menu, but if you want, ports can be removed from the switch configuration, and used for routing purposes.



24V 1.2A power adapter

[View product online](#)



CCR1072 undergoing final testing procedures

Our fastest Cloud Core Router ever is undergoing the final testing stages before going to mass production. The new CCR1072 uses a state of the art Tiler CPU with 72 CPU cores, together with 16GB of RAM it will provide throughput and processing power, never before possible. The device features eight SFP+ 10Gbit capable ports, a copper Ethernet port, a console port, a smart card slot and for the first time - hot swap power supplies.

The new device will be available soon, so keep following our newsletters and our website www.routerboard.com

